



Welcome!

This is the first community update for the 100 Mile Northeast wildfire Complex. The most up-to-date information is also available on the on the **Wildfire of Note** page: <http://ow.ly/29Ph30rMiMg>

The Wildfire of Note webpage will be updated whenever there are significant changes to the wildfire situations whereas this bulletin will be disseminated once a day or less frequently, as required.

FIRE: South of Canim Lake Wildfire (C41100)

FIRE SIZE: 2,343 hectares (estimated)

FIRE STATUS: Out of Control

RESOURCES:

There are currently 25 firefighters, 25 pieces of heavy equipment, structural protection personnel and there are 12 helicopters are available to continue to action the fires within the Northeast complex with bucketing activities.

UPDATES:

- Last night ground personnel remained on site performing night operations monitoring.
- Today, crews are working to establish a hose lay on the northeast corner moving south along the established guard. They are monitoring the east flank, and continue to work the southwest corner and black line the west flank. Heavy equipment continues work on fire guards.
- Structure protection personnel have been deployed and are being supported by fire crew personnel.
- Decreased visibility has made accurate tracking challenging in recent days.

EVACUATION ALERTS AND ORDERS:

The Evacuation Order issued by the Cariboo Regional District for the south side of Canim Lake remains in place. The north side of Canim Lake remains on Evacuation Alert.

Evacuation information is also available on our map [here](#) or at <http://ow.ly/uo2U30oXqzS>

ADDITIONAL CONTACT INFORMATION:

100 Mile Northeast Complex Fire Information Team:

250 268-1857 or BCWS.NorthEastInfo@gov.bc.ca





FIRE: Flat Lake (C41602)

FIRE SIZE: 14,000 hectares (estimated)

FIRE STATUS: Out of Control

RESOURCES:

There are currently 35 firefighters, 64 pieces of equipment and there are 12 helicopters available to continue to action the fires within the Northeast complex with bucketing activities.

UPDATES:

- Today crews are working with heavy equipment to establish and gain access in the area to the southeast of the fire and to support line in and around identified values. There are 12 helicopters available to continue to action the fires within this complex with bucketing activities
- Structural protection specialists have assessed and deployed structural protection units on properties on the west side of the highway and will continue to do so today.
- On Friday, aerial ignitions were successfully completed on a small portion of the southeast flank of the fire. This operation served to reduce the fire perimeter, allowing water skimmers to action the fire in conjunction with the ignition. Opportunities for aerial ignitions in other areas of the fire will continue to be assessed.
- Late yesterday afternoon, there was some fire growth to the southeast and smoke was visible from Highway 97 and surrounding communities.
- If conditions permit, there will be planned ignitions this afternoon on the southeast flank of the Flat Lake fire. The planned ignition area is south of Bishop and Eighty Three Lakes, west of the powerlines and north but parallel to Stormy Road. Smoke will be visible from Highway 97 and surrounding communities.

EVACUATION ALERTS AND ORDERS:

Yesterday, July 17, 2021, the Thompson Nicola Regional District upgraded an Evacuation Alert to an Order for the Flat Lake Wildfire Electoral E (Bonaparte Plateau) in the vicinity of Gustafsen and Neilson Lakes. The additional Evacuation Alert issued by the Thompson Nicola Regional District remains in place. The Evacuation Order and Alert issued by the Cariboo Regional District remain in place. The District of 100 Mile House has also issued an Evacuation Alert.

Evacuation information is also available on our map [here](#) or at <http://ow.ly/uo2U30oXqzS>

ADDITIONAL CONTACT INFORMATION:

100 Mile Northeast Complex Fire Information Team:

250 268-1857 or BCWS.NorthEastInfo@gov.bc.ca





FIRE: Succour Lake (C41191)

FIRE SIZE: 529 ha (estimated)

FIRE STATUS: Out of Control

RESOURCES:

There are currently 35 firefighters, 64 pieces of equipment and there are 12 helicopters available to continue to action the fires within the Northeast complex with bucketing activities.

UPDATES:

- There has been minimal growth of this wildfire over the last 10 day and it is not threatening any communities or access roads at this time. When the fire was first detected, ground crews actively worked on suppressing the southeast corner however, the hose lay equipment has been demobilized at this time and the BC Wildfire Service will continue to monitor the fire. Resources are working nearby and will respond to the fire if necessary.

EVACUATION ALERTS AND ORDERS:

The Evacuation Alerts issued by the Cariboo Regional District for the north side and west side of Canim Lake remain in place.

Evacuation information is also available on our map [here](#) or at <http://ow.ly/uo2U30oXqzS>

ADDITIONAL CONTACT INFORMATION:

100 Mile Northeast Complex Fire Information Team:

250 268-1857 or BCWS.NorthEastInfo@gov.bc.ca





OTHER FIRES

INITIAL ATTACK:

The BC Wildfire Service maintains the capability of responding to new fires throughout the 100 Mile Fire Zone and throughout BC. Many of the existing fire have been downgraded in status from Out of Control to Under Control, or Being Held.

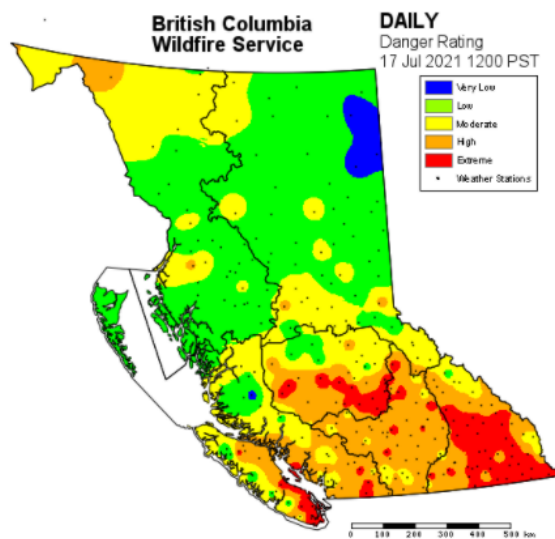
The Province of British Columbia is experiencing higher than average fire activity. There are currently 306 active wildfires in BC. The Cariboo Fire Centre currently has 50 active wildfires.

FORECAST:

Sunday: Sunny with cloudy periods. Areas of smoke. Winds S to SE 10 to 15 km/h by the afternoon. A few gusts to 20 km/h by late afternoon. MAX TEMP 26 C. MIN RH 30%.

Outlook: Monday and Tuesday: The upper low will retrogress westward to move west of Haida Gwaii. This will allow ridging from southern B.C. to move northward into the southern Cariboo. Thus the trend will be for sunnier skies and warming and drying for the fire sites. Wind directions indicate S to SE for Monday and S to SW for Tuesday. Afternoon speeds 10 to 15 km/h with some late day gusts to 20 km/h.

FIRE DANGER RATING



Spot a wildfire, smoke or illegal fire activity? Call 1 800 663-5555 or *5555 on your cellphone.








HELPFUL RESOURCES:

- View an interactive map by clicking [here](#) or visiting <http://ow.ly/uo2U30oXqzS>
- **Road Closures:** DriveBC | dial 1-800-550-4997 | <https://www.drivebc.ca/>
- **Drifting Smoke:** www.bcairquality.ca/bluesky/west/index.html
- **Smoke Health Concerns:** HealthLink BC | dial 8-1-1 | www.healthlinkbc.ca/kbaltindex.asp
- For info on **Community Support Services**, click [here](#) or visit <https://www.emergencyinfobc.gov.bc.ca/>
- For **damage** to private property and Reserve Lands, please email BCWSClaims2019@gov.bc.ca.

ROLES AND RESPONSIBILITIES

BC Wildfire Service	Emergency Management BC	Local municipalities and regional districts	First Nations
<ul style="list-style-type: none"> - BCWS's jurisdiction covers all BC Parks, Crown and private lands, but does not include the boundaries of local governments that have forest fire prevention bylaws and are serviced by a fire department. - BCWS speaks directly about wildfires (i.e. fire status, operations, etc.) and is responsible for disseminating wildfire updates to local governments, stakeholders, First Nations and the public. - BCWS does <u>not</u> announce Strategic Evacuation Orders or Alerts. - BCWS <u>does</u> announce Tactical Evacuations. - In the event of an imminent threat to public safety, BCWS can authorize an immediate Tactical Evacuation of the affected area. 	<ul style="list-style-type: none"> - EMBC coordinates communication across all agencies and stakeholders to support communities. - EMBC provides advice to evacuees and support to communities regarding Emergency Operations Centres and Emergency Support Services. 	<ul style="list-style-type: none"> - Local Municipalities and Regional Districts speak directly about Strategic Evacuation Orders and Alerts in their respective jurisdictions. - Local Municipalities and Regional Districts <u>do not</u> speak about the status of a wildfire unless the fire occurs within their jurisdiction. For example, if a wildfire <u>starts</u> within the boundaries of a local government, BCWS will often assist the local fire department with suppression efforts. If the fire spreads into Crown land to become a wildfire, BCWS will often assume control. 	<ul style="list-style-type: none"> - On IR lands, Evacuation Orders and Alerts are implemented by a Band Council Resolution or other. - A designated person(s) from the respective First Nations community will speak to Evacuation Orders and Alerts on IR lands.

ACCESSING INFORMATION

BC Wildfire Service Online Communications	EmergencyInfoBC EMBC Online Communications	PreparednessBC EMBC Online Communications
 @BCGovFireInfo	 @EmergencyInfoBC	 @PreparedBC
 www.bcwildfire.ca	 www.emergencyinfobc.gov.bc.ca	 www.gov.bc.ca/preparedBC
 BC Wildfire Service		PreparedBC